

SONY

Hi-Fi Products
Service Bulletin

Sony Service Company - Technical Services
A Division of Sony Corporation of America
Sony Drive, Park Ridge, New Jersey 07656

Model: D-9

No. 111

Subject: Extender Cable Available
For Service

Date: February 28, 1990

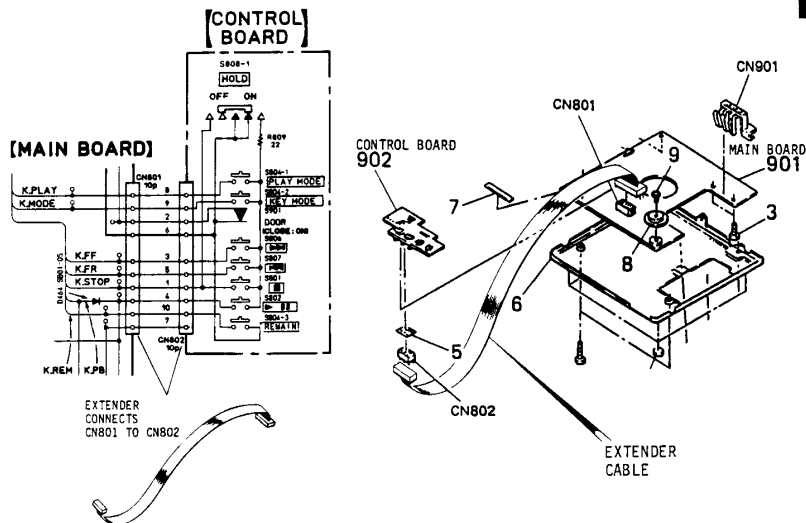
Symptom:
(**)

There is an Extender Cable available that allows the Control PCB to be separated from the Main PCB for easier servicing.

Solution: The part number for the Extender Cable is listed below:

Description	Part Number
10-Pin Extender Cable	J-8000-014-A

CSA-13 Discman



Reference: Tokyo Tech News DS089-0071

PRINTED IN U.S.A.
CSA-13290-2